

“ Parce qu’il purifie la lumière, le cristal nous rappelle par sa transparence une forme de spiritualité.

*Crystal purifies light and its transparency reminds us of a form of spirituality.*

Fernando & Humberto Campana

”



Unit 1101, 11/F, Cheung Sha Wan Plaza, Tower 1833  
Cheung Sha Wan Road, Lai Chi Kok, Kowloon Hong Kong

21 Boulevard Haussmann, 75009 Paris

Web: [www.astelum.com](http://www.astelum.com)

© 2014 Astelum limited All rights reserved.

# Crystal Clear Elegance

# State of the art, beautiful and unique light bulb.

The Astelum was created with the idea of working and constantly improving a solution for chandelier and candelabra that will give the best product for lighting designers.



## The most beautiful design

The Astelum, a LED bulb with a unique diamond design is not only aesthetically pleasing, the finely-crafted shape also maximizes the functionality of the candelabra bulb. The Astelum shows a spectacular diamond-like light refraction generated by the accurately-cut facets and crystal prisms.

## Optimised lighting effect

Shaped with 132 facets, The Astelum shows its distinctive sparkling effect and raises the beauty of your chandelier even when the light is off. The inside cone has been designed to enhance the light refraction whilst illuminating your chandelier crystals.

## The best material

We carefully select the finest crystals, then it is individually cut by hand, the Astelum redefines the light sources by turning it into a unique piece of interior design. Astelum works with the highest quality of crystal picked for their quality and the prismatic brilliance with a high reflective capacity.

## State of the art technology

Astelum uses the best quality High Voltage(HV) LED chip to be the most efficient. To support this chip, we use a custom made high heat conductor for optimum longevity. Our E14 bulb socket is filled with a high thermal conductivity polymer that keeps the temperature below 55°C. Astelum thermal management is the key for reliability assurance and product lifetime. The Astelum is the most technically advanced chandelier bulb.

Reference	Description	Socket	Bulb shape	Lumen output (lm)	Efficacy (lm/W)	Units per pack	CRI	Color temperature (K)	Height (mm)	Diameter (mm)	Weight (kg)
AS E14 K9 27K G61	2.2 W E14 2700K 230V	E14	P48	165	75	10	80	2700	76	33	0.11
AS E14 K9 40K G61	2.2 W E14 4000K 230V	E14	P48	165	75	10	80	4000	76	33	0.11

## Lumen maintenance at rated life

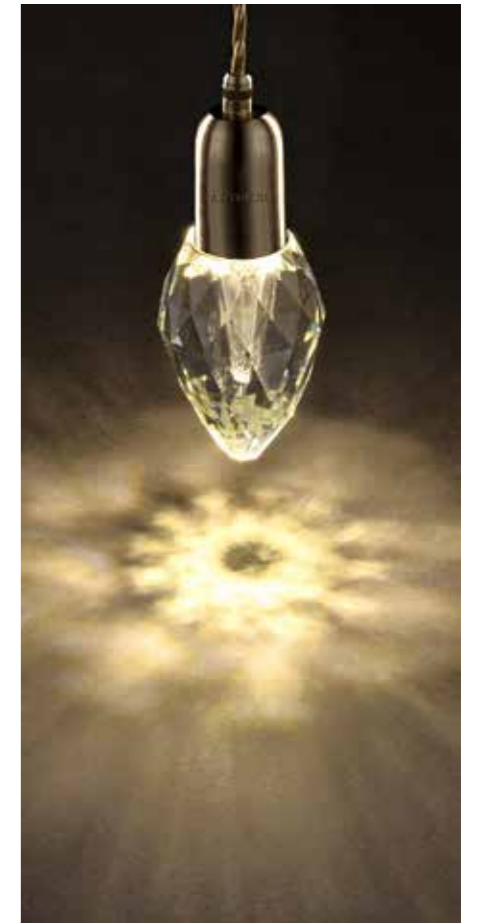
>70% lumen maintenance by 90% of lamps at 20,000 hours

## Operation and maintenance

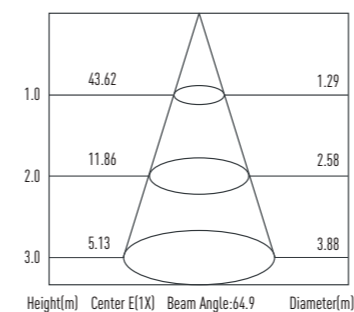
- Store and use the lamps the same way as traditional incandescent lamps.
- Observe wattage limitations of your fixture.
- Lamps should be kept free from contamination.
- Good condition of the lampholder contacts is important to ensure proper operation of lamp.
- Ensure lamp is cool before removing.
- Do not use the lamp if the bulb is broken, even if the LEDs still operate. There is a risk of electric shock.
- Switch off mains supply before installing/removing lamp.

## Standards

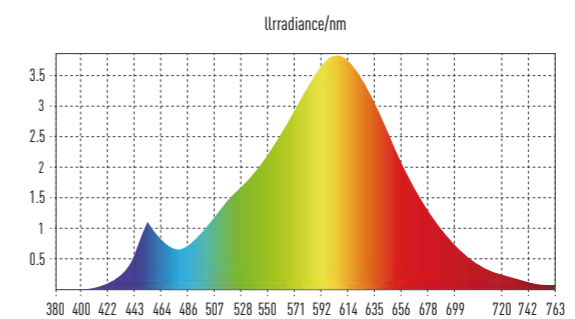
- IEC62560: Self-ballasted LED-lamps for general lighting services by voltage > 50 V - Safety specifications
- IEC62471: Photobiological safety of lamps and lamp systems
- EN55015: Limits and methods of measurement of radio disturbance characteristics of electrical lighting and similar equipment
- EN61547: Equipment for general lighting purposed EMC immunity requirements
- EN61000 -3-2: Limits for harmonic current emissions
- EN61000 -3-3: Limitation of voltage fluctuations and flicker in low voltage supply systems for equipment with rated current ≤ 16A
- IEC60630: Maximum lamp outlines for incandescent lamps
- IES LM -79-08: IES approved method for the electrical and photometric measurements of solid-state lighting products
- IES LM -80-08: IES Approved Method: Measuring Lumen Maintenance of LED Light Sources
- IEC62612(PAS) Self-ballasted LED-lamps for general lighting service >50V – Performance requirement



## Illuminance-Distance Curve



## Light Spectrum



## Light Technical

